

BNC Masters 2018



Oil Pattern Distance: 40 Feet **Reverse Brush Drop:** 40 Feet **Oil Per Board:** 50 uL
Forward Oil Total: 15.1 mL **Reverse Oil Total:** 8.2 mL **Volume Oil Total:** 23.3 mL
Forward Boards Crossed: 302 Boards **Reverse Boards Crossed:** 164 Boards **Total Boards Crossed:** 466 Boards

	Start	Stop	Loads	Speed	Crossed	Start	End	Feet	T.Oil
1	2L	2R	4	10	148	0.0	4.2	4.2	7400
2	9L	9R	1	14	23	4.2	6.1	1.9	1150
3	10L	10R	2	14	42	6.1	10.0	3.9	2100
4	11L	11R	3	14	57	10.0	15.9	5.9	2850
5	12L	12R	1	18	17	15.9	18.4	2.5	850
6	13L	13R	1	18	15	18.4	20.9	2.5	750
7	2L	2R	0	30	0	20.9	40.0	19.1	0

Forward Reverse More

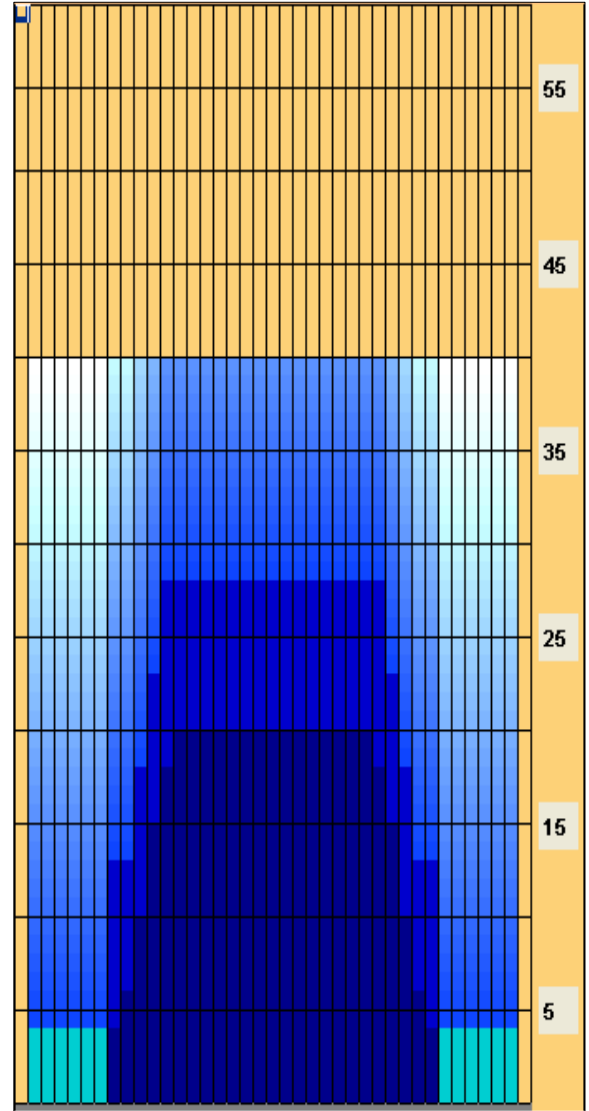
	Start	Stop	Loads	Speed	Crossed	Start	End	Feet	T.Oil
1	2L	2R	0	30	0	40.0	28.0	-12.0	0
2	12L	12R	2	18	34	28.0	22.9	-5.1	1700
3	11L	11R	2	18	38	22.9	17.8	-5.1	1900
4	10L	10R	2	18	42	17.8	12.7	-5.1	2100
5	8L	8R	1	18	25	12.7	10.2	-2.5	1250
6	8L	8R	1	14	25	10.2	8.3	-1.9	1250
7	2L	2R	0	14	0	8.3	0.0	-8.3	0

Forward Reverse More

Conditioner:
 Type In or Select One

 TransferType:
 Type In or Select One

- Forward
- Reverse
- Combined
- Buff



Item	3L-7L:18L-18R	8L-12L:18L-18R	13L-17L:18L-18R	18L-18R:17R-13R	18L-18R:12R-8R	18L-18R:7R-3R
Description	Outside Track:Middle	Middle Track:Middle	Inside Track:Middle	Middle: Inside Track	Middle:Middle Track	Middle:Outside Track
Track Zone Ratio	5	1.69	1	1	1.69	5

